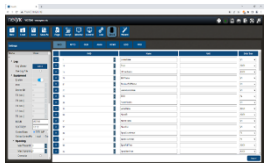
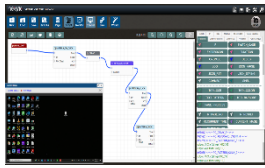


Main Features

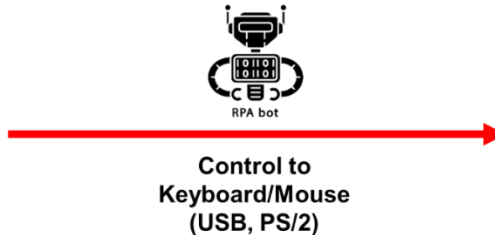
VIC Flow & RPA



VIC SECS/GEM SEMI E5/E30/E37



VIC7000



Be controlled device

- ◆ **Non-intrusive** Data collection
- ◆ **Zero-risk** installation and operation
- ◆ **Does Not Affect** Existing system
- ◆ **30-min** quick setup

Product Overview

To accelerate industry 4.0 and solve connectivity incapability on traditional equipment. The VIC7000, a Vision Intelligence Collector and RPA, employs a safe and non-intrusive method to extract data from PC-based equipment / real-object via display-signals / Webcam in the most efficient way, especially without affecting in-operation equipment. As the real-time data acquisition kicks off, production data will be acquired.

This acquired data can then be further exploited either for improving manufacturing efficiency, optimizing costs or operational processes. The VIC7000 system breaks through the limitation of unconnected equipment and simplifies network deployment for smart manufacturing. Furthermore, the product comes with a user-friendly and Graphic drag-drop interface allowing operators to adjust configuration settings, making the installation process easier while having the possibility to operate remotely. The VIC7000 is compatible with other NexAloT's related IoT Total Solutions that provide developer tools for users to meet all the needs in designing smart factories.

Ordering Information

- ◆ VIC7001-RPA (PN: 10V70700100XR) matching NIFE105W
- ◆ VIC7200W (PN: 10V7072000WXR) matching NISE105U
- ◆ VIC7200W-webcam (PN: 10V707200W1XR) matching NISE105U
- ◆ VIC7310 (PN: 10V70731000XR) matching NISE3600CE
- ◆ VIC7500TMP (PN: 10V7075000MXR) matching NISE3900E2
- ◆ PS2 Control Box (PN: 10V70700003XR)

Options

- ◆ 24V, 120W AC to DC power adapter w/o power cord (PN: 7400120023X00)
- ◆ 120W POWER CORD 3PIN
P/N: 60233POW38X00 (US), P/N: 60233POW39X00 (EU), P/N: 60233POW40X00 (UK)

Product Specification

VIC-RPA Function Table

	VIC7001-RPA	VIC7310	VIC7500TMP	VIC7200W	VIC7200W-webcam
MODE	Single Channel		Multi-Channel / page	Single Channel	
Page	5	50	2Channel / 50 Page	20	
OCR	250	500			
COLOR	25	50			
PATTERN	5	10			
BARCODE	X				7200W webcam(20)
TARGET_OCR	5	50		20	
TARGET_COLOR					
TARGET_PATTERN		10			
TARGET_BARCODE	X				7200W webcam(10)
OCR CHAR	100				
All of Module	400	2000	10000	800	
Database	SQL-lite	MYSQL		SQL-lite	
Capture source	mPCIe Capture	PCIe Capture	PCIe multi-capture	mPCIe Capture	Webcam
Max Frame Rate	30				
Vision Source					
browser					
RTSP	V				
Host capture					
Sub-Function					
Barcode	X				7200W webcam(V)
RPA Control	V	V	V		V
DB-trigger	X		V	X	X
Vision Record	X		V		
Trend Chart					
Script	Python				
Python-module					
Python-tool-module					
VIC-Flow	V				
SECS/GEM					
Chinese Inspection					

Solution Architecture

