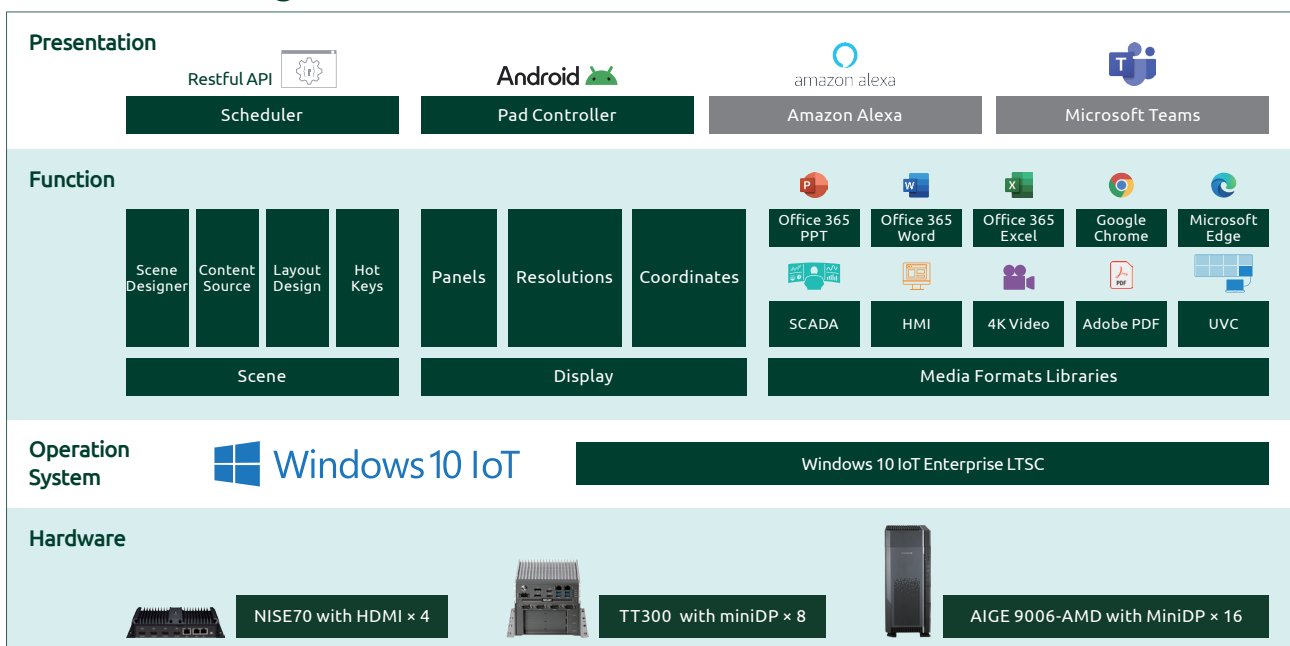


Product Overview

NexWall is a TV wall player for designing an interactive enterprise war room. It can support from 2×2 to 4×4 displays and up to 16K resolutions. Users can predefine layouts for each application contents and then arrange story by various scenes. Then present it by air mouse or tablet to show all kind of systems in one place to enable decision maker get more and real time messages.

The NexWall scene designer allows users to design the presentation via NexWall console for a single player. This handy tool gives users the freedom and flexibility to add, modify and control different types of rich media files from pictures, video files, web to presentation.

Software Building Blocks

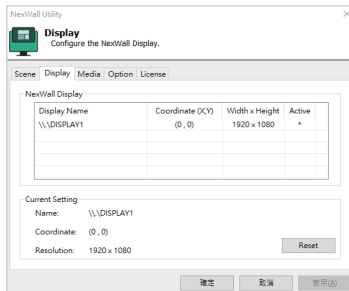


NOTES:

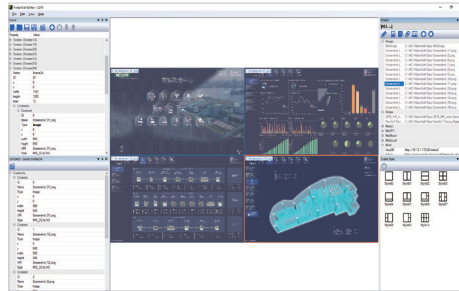
- Support only Office 365: PowerPoint, Word, Excel and must be saved on one drive for sharing.
- Pad Controller, Amazon Alexa, Microsoft Teams are supported by project base, please contact sales for more information.

Function & UI

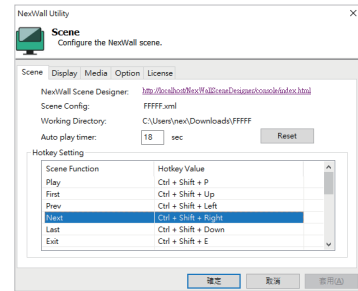
1. Display & Resolution Setting



2. Arrange Contents by Scene Designer



3. Customize Hotkey & Play



Specifications

NexWall	Features
Content Support	<ul style="list-style-type: none"> - Graphic: JPG, BMP, PNG, ICO, ICP, GIF, TIFF, WMF - Audio: MIDI, MPEG-1-Audio Layer II (MP2), MP3, SND, M4A, AAC, WAV, WMA, OGG, RA - Video: MPEG 1/2/4, AVI, WMV, DivX, XVID, VOB, MOV VC-1, H.264, rm, rmvb - Google Chrome Browser - Microsoft Edge Browser - Adobe Reader PDF - UVC: USB video class, USB Capture Box - Microsoft 365: PowerPoint, Word, Excel
HotKey Support	<ul style="list-style-type: none"> - Play (Ctrl + Shift + P) - First (Ctrl + Shift + Up) - Prev (Ctrl + Shift + Left) - Next (Ctrl + Shift + Right) - Last (Ctrl + Shift + Down) - Exit (Ctrl + Shift + E) - Demo (Ctrl + Shift + D)
Scene Designer	<ul style="list-style-type: none"> - Content Source: to add new content files or manage the content files you previously created - Layout Design: to add new design presentation or manage the design presentation you previously created
Support Hardware	<ul style="list-style-type: none"> - NISE 70 (2x2) - TT300-A3Q (2x3, 2x4) - AIGE 9006-AMD (2x4, 2x5, 3x3, 3x4, 4x4)

Support OS

- Windows 10 IoT Enterprise LTSC (64-bit)

Ordering Information

- **NexWall Professional Version (P/N: 6014500177X01)**
NexWall interactive video wall player professional (Windows)
- **NISE 70-T02 (P/N: 10J00007001X0)**
Intel® Core™ i5-1145G7E Tiger Lake-UP3 processor system with fan (Optional fanless with 15W TDP limit)
- **TT 300-A3Q barebone (P/N: 10JT0030018X0)**
24V, 120W AC to DC power adapter without power cord (P/N: 7400120029X00)
- **AIGE 9006-AMD (P/N: 86-SYS-SPMR-1)**
Workstation for training, rendering, simulation and 3D modeling